



**IN THIS ISSUE:**

Note from the Director	2
What's Going On?	3
New Faces	4
Did You Know?	5
Fall Camp Fun	5
Summer Staff 2023	6
Jesus is the Light	7

Volume 21, Fall 2023



## Lake View Camp

Address: PO Box 836  
Pella, IA 50219

Phone: (641) 628-2160

Website:  
lakeviewconference.com

**Mission:** To provide a broken world with environments where lives encounter God's love and are being transformed by the hope that Christ gives.

**Vision:** To provide a Christian ministry where all people are welcomed and thus feel the presence of God.

### Lake View Board Members:

President - Mark Kuiper  
Secretary - Lance Ibeling  
Treasurer - Sharon Seekamp

Rev. Joe Brummel  
Jen Flug

Dort Kampman  
Shonda Kuiper  
Julie Ver Steegh

## Light in the Darkness

### A Note From the Director

I don't know about you, but fall is one of my favorite seasons. It brings cooler air, the changing of the leaves, and harvest. What I don't like about fall, though, is the shorter days. It is darker in the morning with a later sunrise, and it gets dark earlier in the evening. I like the light!

This summer our theme for camp was "Jesus is the Light." Many sources say that light is mentioned 263 times in the Bible. John 12:46 says, "I have come into the world as light, so that no one who believes in me should stay in darkness." The world needs to know the light of Christ and to live in it, to step out of the darkness, and to share His light and love with others! Ephesians 5:8-9 says, "For you were once darkness, but now you are light in the Lord. Live as children of the light (for the fruit of light consists in all goodness, righteousness, and truth)."

This summer we challenged campers to find the Light, bring the Light to their hearts, and be the Light for others. This challenge extends to all of us! The camp is deeply blessed when others shine Christ's light through their support of God's ministry at Lake View. This is done in many ways - through financial gifts, through giving of their time and talents as volunteers, through service as a summer counselor, through volunteers who make it possible to hold off season retreats, through churches who send their youth and adults to attend our camps and retreats, and so much more! In a world that seems so full of darkness at times, we want to give a big, heartfelt THANK YOU to all who have shined Christ's light from your lives to the lives of campers, staff, and programs at Lake View! We desire to be Christ's light in a dark world, and through you, we can be! Thank You!

The chorus to a well known song by DC Talk says it best, "I want to be in the Light as You are in the Light. I want to shine like the stars in the heavens. Oh, Lord be my Light and be my salvation, cause all I want is to be in the Light!"

*Diana L. Brummel*



**Make an Impact for Christ!**

Apply today to be a Lake View Camp Counselor!  
Visit our website for an application.

## MARK YOUR CALENDAR FOR 2024!

JAN 20-21 HIGH SCHOOL WINTER RETREAT

MIDDLE SCHOOL WINTER RETREAT FEB 17-18

MAR 9-16 SPRING BREAK MISSION TRIP (SITE TBD)  
open to high school students, college students, & adults

VOLUNTEER @ TULIP TIME Pella // LVC Food Stand MAY 2-4

SUMMER SCHEDULE WILL BE RELEASED IN JANUARY

MIDDLE SCHOOL FALL RETREAT OCT 19-20



# What's GOING ON?

Blessings! We completed two new building projects this past spring which allows us to hold larger camps, and both are blessings! We finished a beautiful pavilion outside the Impact Lodge that allowed us to effortlessly seat more campers and counselors during mealtimes. Volunteers pushed hard to complete two new mobile cabins right at the start of summer so we could add 20 more beds for campers and staff. The Lord has truly provided what we needed at the perfect time. The cabins were full nearly every week this past summer, meaning more kids were able to hear the life changing story of the Gospel.

Work groups this fall have also been busy at the camp. What a blessing volunteers are to the camping ministry! A bridge linking two trails has been constructed and a basketball court was added by the Impact Lodge. Campers and staff will love the new hiking option and the additional space for games and activities.

The next step in future development with funds from the New Home, Same Foundation Campaign is a large septic system that will accommodate future buildings and phases. We have been waiting for a long time for site approval from the DNR for the septic location. Now that a location has been approved, we are working with Environmental Engineers to design and install this septic system – praise God! This will allow the camp to continue to move forward! The crews are mapping and prepping the area this fall so that installation can take place in 2024.



Volunteers standing by 1 of the 2 cabins completed just in time for summer camps!

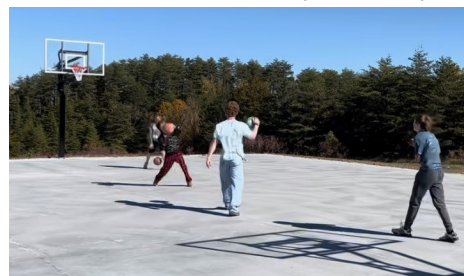


Students from Central College worked on the new trail bridge during their Fall Service Day.



The new pavilion outside the Impact Lodge was used almost every meal time this past summer. No more pop-up canopy tents to mess with!

Having a paved surface for outdoor programming has been on the wish list for several years. We are excited it is finally done! This space will be used as a basketball court, 4 square court, trike race track, sidewalk chalk canvas, dry spot to sit when everywhere else is muddy for games and Bible Study groups, and so much more! Thanks to Pella Community Foundation, Pella Concrete, Co-Line Welding, Gene Brummel memorials, and several other donors for helping with this project!



## Memorial Gifts Make a Difference!

*Several families have given gifts to Lake View in memory of their loved one (honored below). These gifts greatly bless our ministry and help us honor the loved one by sharing their love for God with everyone who attends our camps. Thank you to the families and friends who chose to honor their loved ones in this way!*

- \* Ed Hoksbergen \* Dee Meadows \* Mark Moss \*
- \* Lee Nunnikhoven \* Charles Koopman \* Joyce Rempe \*
- \* Dorothy Samuelson \* Erma Steenhoek \* Artie Van Zee \*
- \* Melvin Voss \* Mike Wedekind \*

## Camp Wish List

- Sunscreen
- Craft Supplies (Acrylic paints, Embroidery floss, Loom rubber bands)
- Twin size sheet sets
- Menards rebates
- Water tank and trailer (for new trees)
- Skid loader
- Pickup Truck
- UTV / golf cart

Call or email if you can help out!



# New Faces >>>>>>>>>>>>>>>>>>>

Welcome Caleb & Elise Kuiper!

Caleb and Elise Kuiper have joined the Lake View team! You could say it was a match made at Lake View, for Lake View. Elise and Caleb grew up going to camp from childhood, but never crossed paths until they met at Central College on a mission trip. Due to Covid-19, the typical mission trip to Texas was cancelled, and the group traveled instead to... Lake View Camp, of course! It was on this trip that everything began. The two ended up dating, working at camp together the summer of 2021, getting married the summer of 2022, and joining full-time staff in 2023 after graduating from Central College.

Caleb puts his biology degree to use maintaining the forests, prairies, and ponds on the property, and he keeps our facilities operating well. Elise works with our summer camp counselors through recruiting and overseeing summer camps, as well as meeting various needs on the property and in the office during the off-season. We are blessed to have them join our full time staff and excited to see how God uses them in His ministry at Lake View!



## GIVE CAMP THIS CHRISTMAS!

**\$12**  
6" Plush Animals



**\$18**  
Comfort Colors tee  
youth small - adult 3XL



Add a camp gift certificate (available in any amount) and you have the perfect Christmas gift! Call or email today!

*(Pick up at our camp office in Pella or shipping available for an additional charge.)*



# DID YOU KNOW?

## Rebirth from the Ashes

This spring we began the process of restoring and strengthening our natural prairie. We organized a prairie burn east of our upper pond. A prairie burn removes invasive species. This allows the native plants to flourish, free from other disruptive plants. A burn seems counterproductive to some, but just like fire refines gold and trials refine our faith, God truly does create beauty from ashes!

*1 Peter 1:7 "These trials will show that your faith is genuine. It is being tested as fire tests and purifies gold—though your faith is far more precious than mere gold. So when your faith remains strong through many trials, it will bring you much praise and glory and honor on the day when Jesus Christ is revealed to the whole world."*



## Fall Camp Fun at Lake View!

We were blessed with a beautiful fall day the first weekend in October for our 9th annual Blazing the Trails 5K and 2nd annual Fall Camp Fun Day. Walkers and runners explored some of the trails at the camp during the 5K trail run, and then families started arriving for the Fall Camp Fun Day. Families enjoyed a variety of camp activities including canoeing, fishing (the fish were cooperating and most caught a fish!), wagon rides, obstacle courses, hiking, crafts, pumpkin painting, barrel train rides, face painting and so much more. The camp store was open selling a new camp shirt as well as poffertjes and a fall version of our Dutch Delight that we sell at our food stand during Tulip Time.

Thank you to all who participated in the Blazing the Trails 5K or came out for the Fall Camp Fun Day. A HUGE thank you to the sponsors and to the volunteers who helped with all the activities and food - they made this event possible. We raised over \$5,000 for our camping ministry. What a blessing, and what a fun day at camp! Thank you!





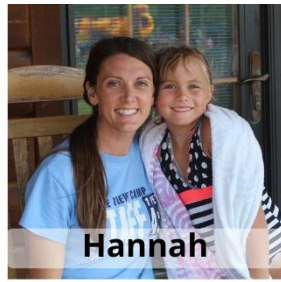
# Meet the Summer Staff of 2023



Diana + Joe



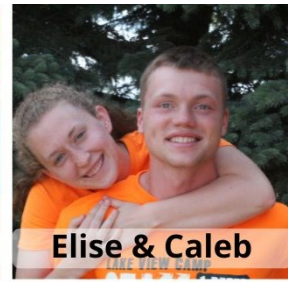
Cathy & Steve  
Abby, Chris, & Josiah



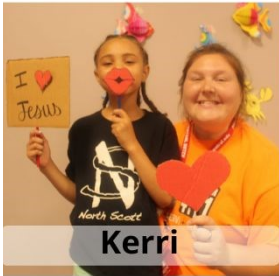
Hannah



Mallori



Elise & Caleb



Kerri



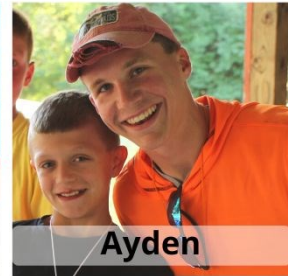
Olivia



Allie



Audrey



Ayden



Ben



Brandon



Bree



Caylee



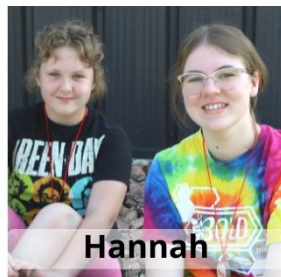
Chris



Cody



Del'Ton



Hannah



Jose



Julie



Kara



Lucas



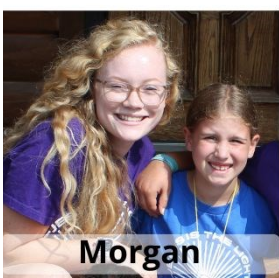
Madison



Mandi



Marshall



Morgan



Sadie



Sara



Sarah



Zach





Please prayerfully consider financially supporting the ministry of Lake View Camp.

**Information**

NAME: \_\_\_\_\_

ADDRESS: \_\_\_\_\_

CITY: \_\_\_\_\_

STATE: \_\_\_\_\_ ZIP: \_\_\_\_\_

PHONE: \_\_\_\_\_

EMAIL: \_\_\_\_\_

Yes! Add me to the email mailing list.

CHURCH: \_\_\_\_\_

**Please Select:**

I would like to make a one-time gift of:  
 \$50  \$100  \$250  \$500  \$1,000  \$2,500  \$5,000 Other \_\_\_\_\_

I would like to make a monthly gift of \$ \_\_\_\_\_ automatically from my bank account.

Bank Name: \_\_\_\_\_  checking  savings

Routing #: \_\_\_\_\_ Account #: \_\_\_\_\_

I authorize Lake View Camp to transfer the amount shown above from the indicated account on the 5th of each month until I notify Lake View Camp to stop my donation.

\_\_\_\_\_  
Signature Date

I would like to donate stock, grain, or other commodities. Please contact me to discuss my gift.

**I want to volunteer!**

Please contact me to help with:

Cleaning  Plumbing

Electrical  Carpentry

Landscaping  Fundraising

Other \_\_\_\_\_

**Please use my gift for:**

Building Fund

Staff Support \_\_\_\_\_ (person supporting if applicable)

Camp Scholarship Fund

Use where most needed in the ministry.

Please make checks to Lake View Camp and mail completed form to PO Box 836, Pella, IA 50219. Gifts are tax deductible to the extent allowed by law. Lake View is a 501(c)3 organization.

**Jesus is the Light**

Rev. Joe Brummel, Program Director

Our theme for camps this past summer, "Jesus is the Light," made for a powerful summer of camp worship.

Light comes to us in the form of Jesus, our Savior. Light brings life and love. The light of Jesus makes us feel safe and provides a light

for how to live life and how to be Christ's light for others. Psalm 119:105 says it best, "Thy word is a lamp unto my feet, and a light unto my path." Campers learned in worship that the Light of Jesus is never overcome by the darkness. Light is not weak or timid, but rather powerful and eternal!

The worship stage was filled with a variety of light sources. Push and switch lights were used so campers could activate them by themselves. They prayed, turned on a light, and many made personal commitments to Jesus Christ. The skits all involved lights being given by God at creation, being snuffed out by Satan, and then again being offered at the cross. Lights were displayed in such creative ways it amazed me, and the campers! Most important of all - the Gospel Truth was presented that Jesus is the Light of the world and in Him is no darkness at all! And children gave their hearts to Jesus. Praise God!

"I am the light of the world. Whoever follows me will never walk in darkness, but will have the light of life." John 8:12







**P.O. Box 836  
Pella, IA 50219**

[www.lakeviewconference.com](http://www.lakeviewconference.com)  
[lakeview@lakeviewconference.com](mailto:lakeview@lakeviewconference.com)

(641) 628-2160

Non-Profit  
Organization  
U.S. Postage  
**PAID**  
Pella, IA 50219  
Permit No. 87



**Connect with Lake View!**

